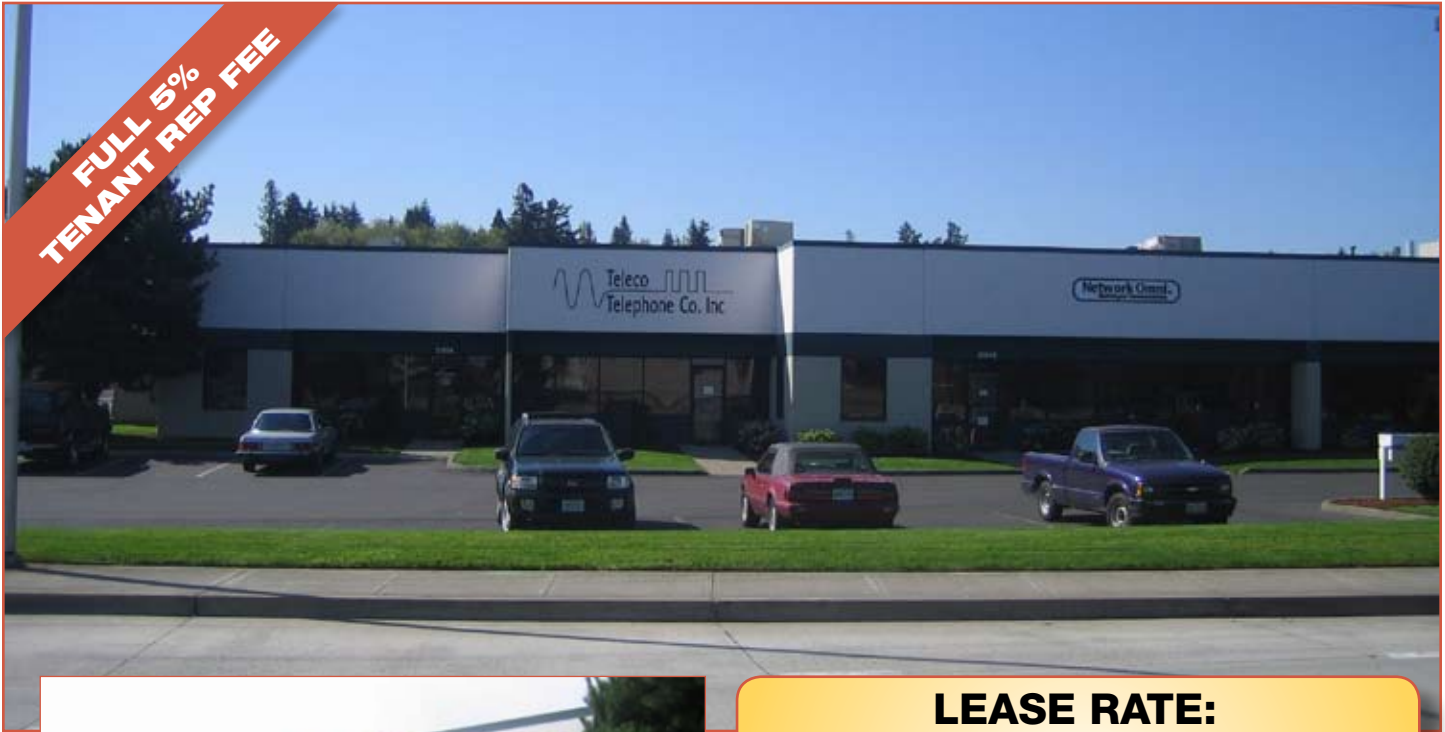


FOR LEASE

CLEAR CREEK BUSINESS PARK-BLDG A

21916-21968 NE Glisan Street • Gresham, Oregon



LEASE RATE:
\$0.38 SHELL ❖ \$0.70 OFFICE

- ❖ 1,917 SF shell available
- ❖ 1,000 SF newly renovated office
- ❖ 917 SF warehouse
- ❖ 4 minutes to I-84
- ❖ 18' clear height
- ❖ One (1) grade door
- ❖ Located in Gresham's High Tech Corridor
- ❖ Business park zoning



Grubb & Ellis[®]

Property Solutions Worldwide



HARSCH
INVESTMENT PROPERTIES

For more information, please contact:

Tyler Sheils • 503.972.5525 • tyler.sheils@grubb-ellis.com

Grubb & Ellis Company

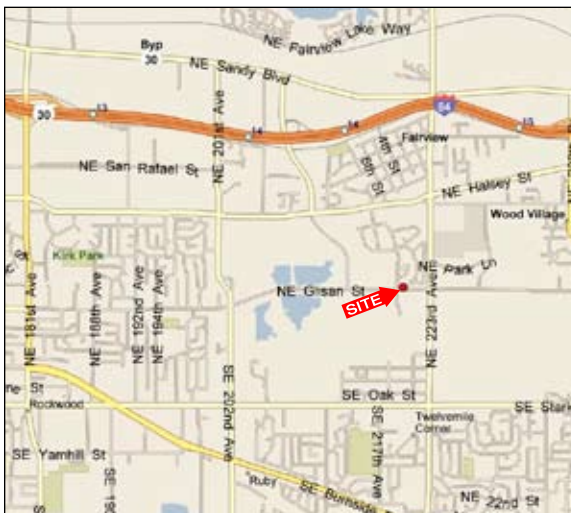
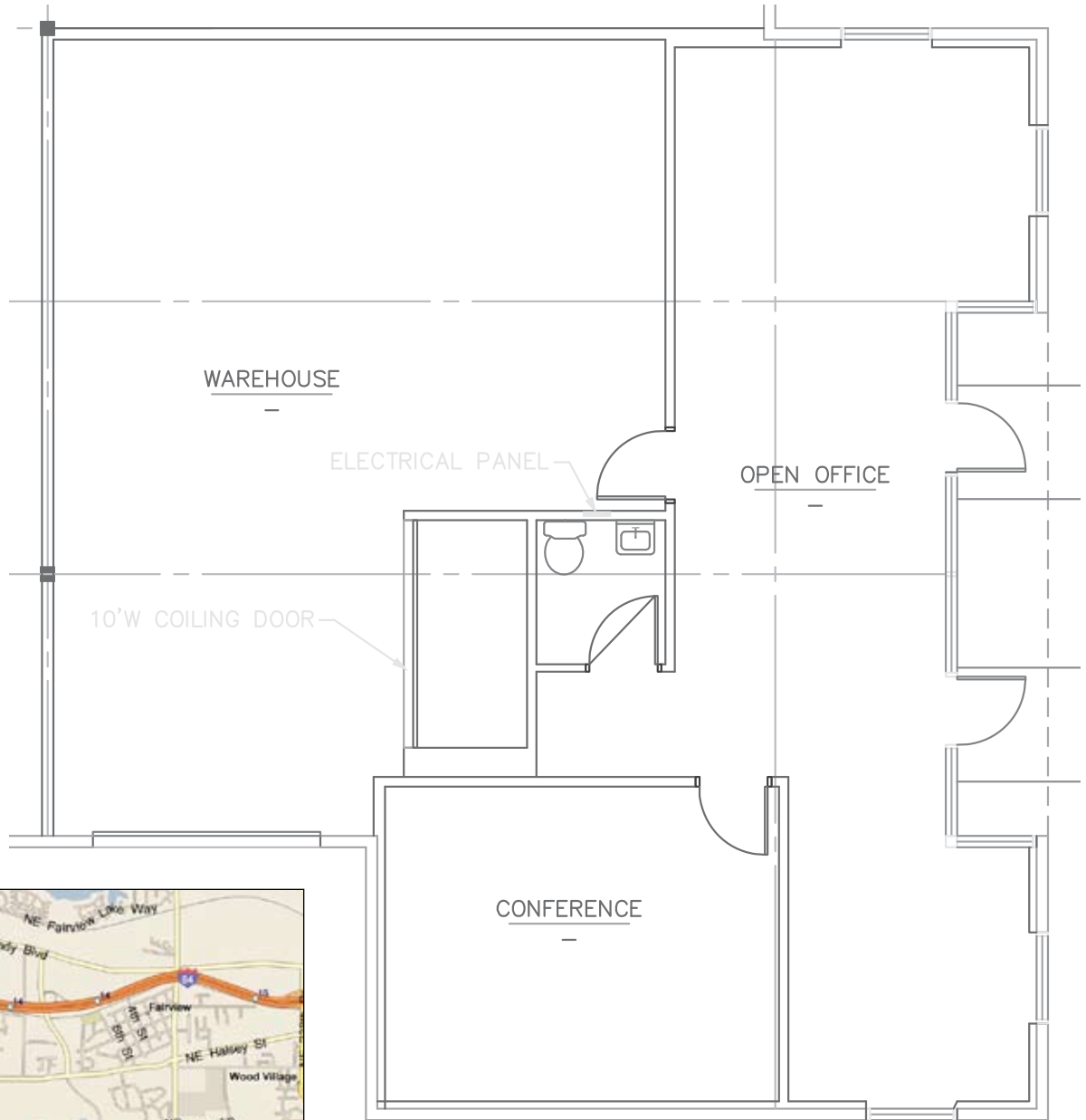
1120 NW Couch St. Suite 350 Portland, OR 97209 503.241.1155 Fax 503.241.0306 www.grubb-ellis.com

This statement with the information it contains is given with the understanding that all negotiations relating to the purchase, renting or leasing of the property described above shall be conducted through this office. The above information, while not guaranteed, has been secured from sources we believe to be reliable.

FOR LEASE

CLEAR CREEK BUSINESS PARK-BLDG A

21916-21968 NE Glisan Street • Gresham, Oregon



For more information, please contact:
Tyler Sheils • 503.972.5525 • tyler.sheils@grubb-ellis.com

